

IDEAL Version: ID13_0C_14

IDF

ARC8A-AA id13_0c_02

Format: Beach VISION Service RM Log

Vertical Scale: 1:500

Graphics File Created: 28-Nov-2008 05:28

PIP SUMMARY

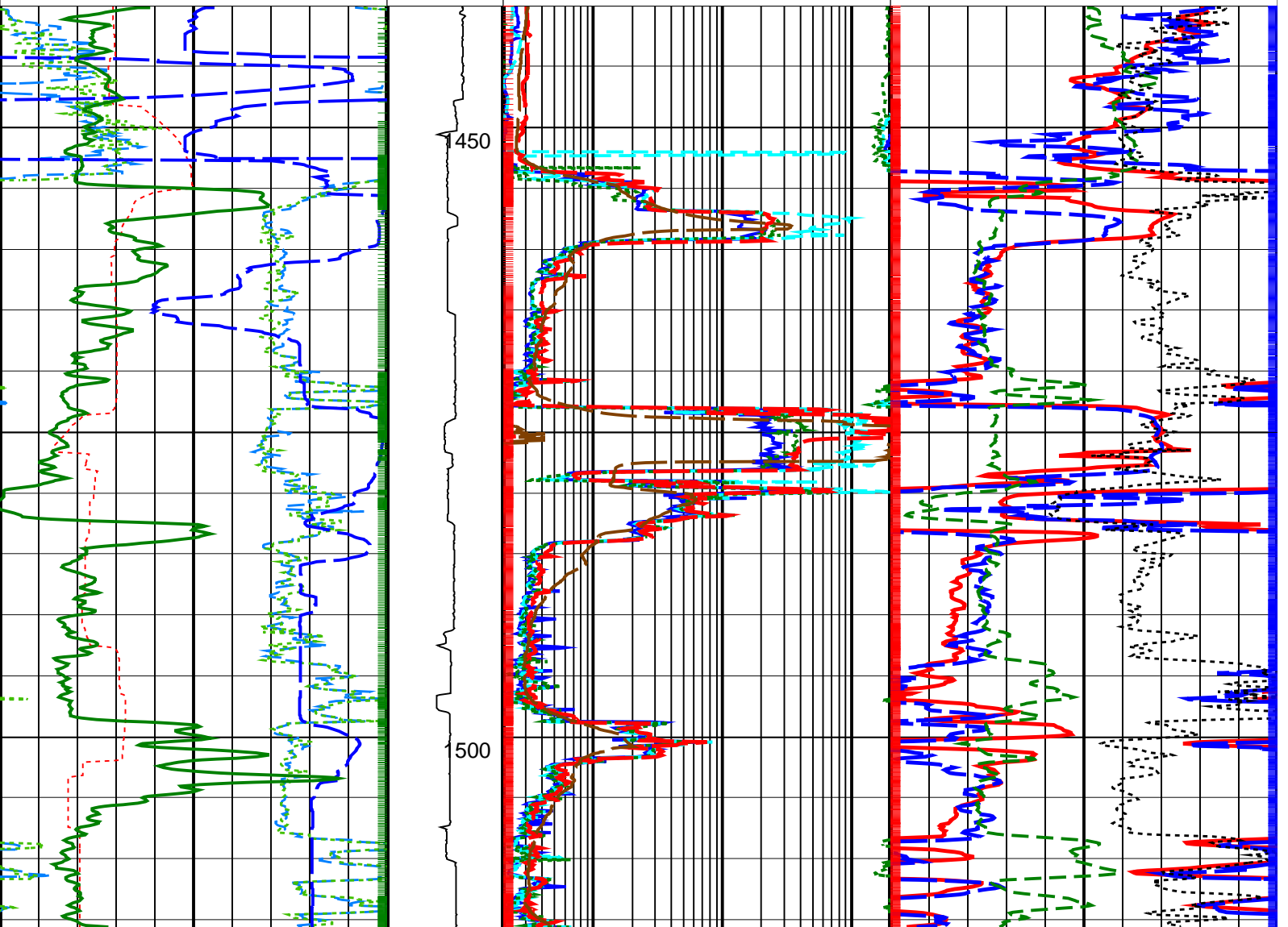
Density Samples †

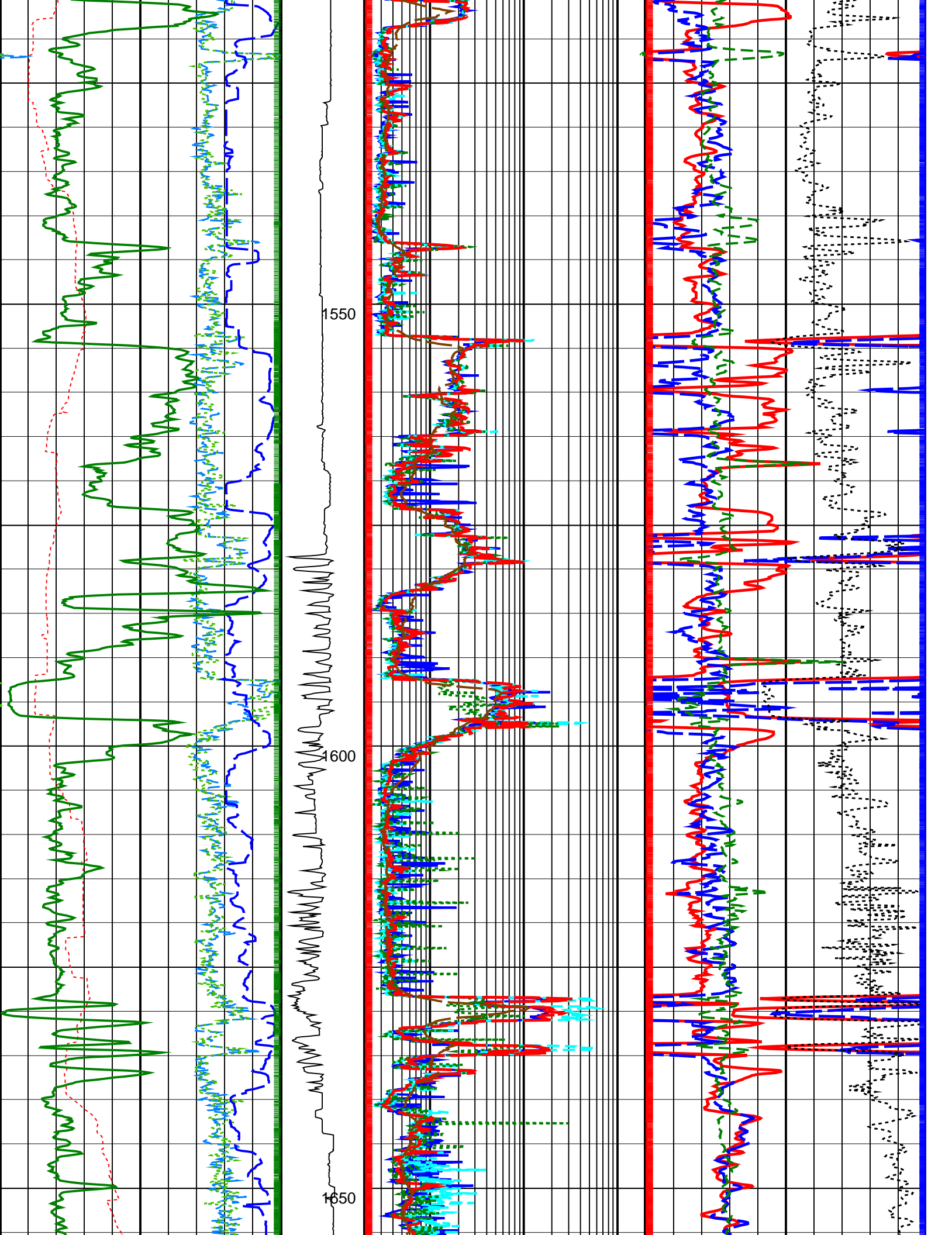
Neutron Samples †

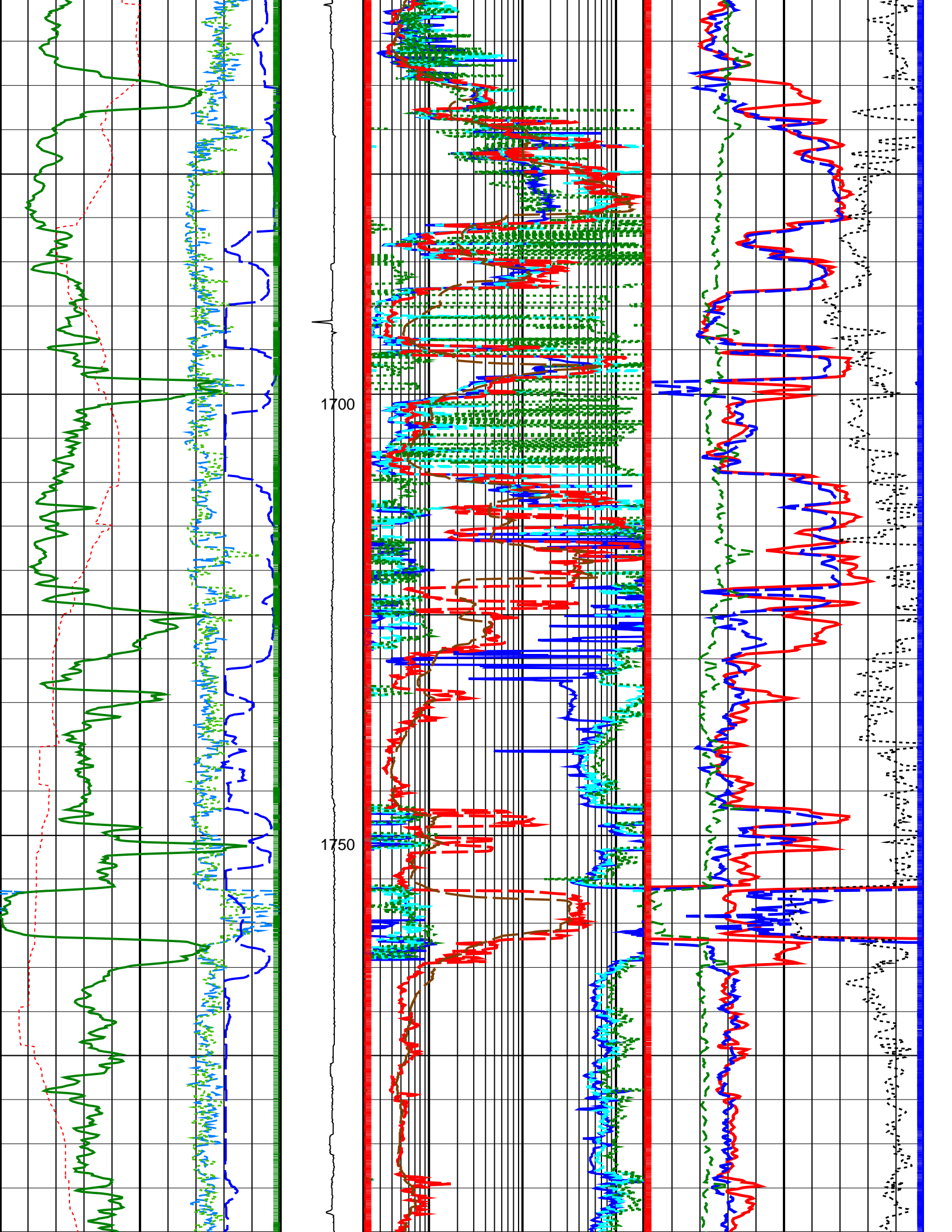
† Gamma Ray Samples

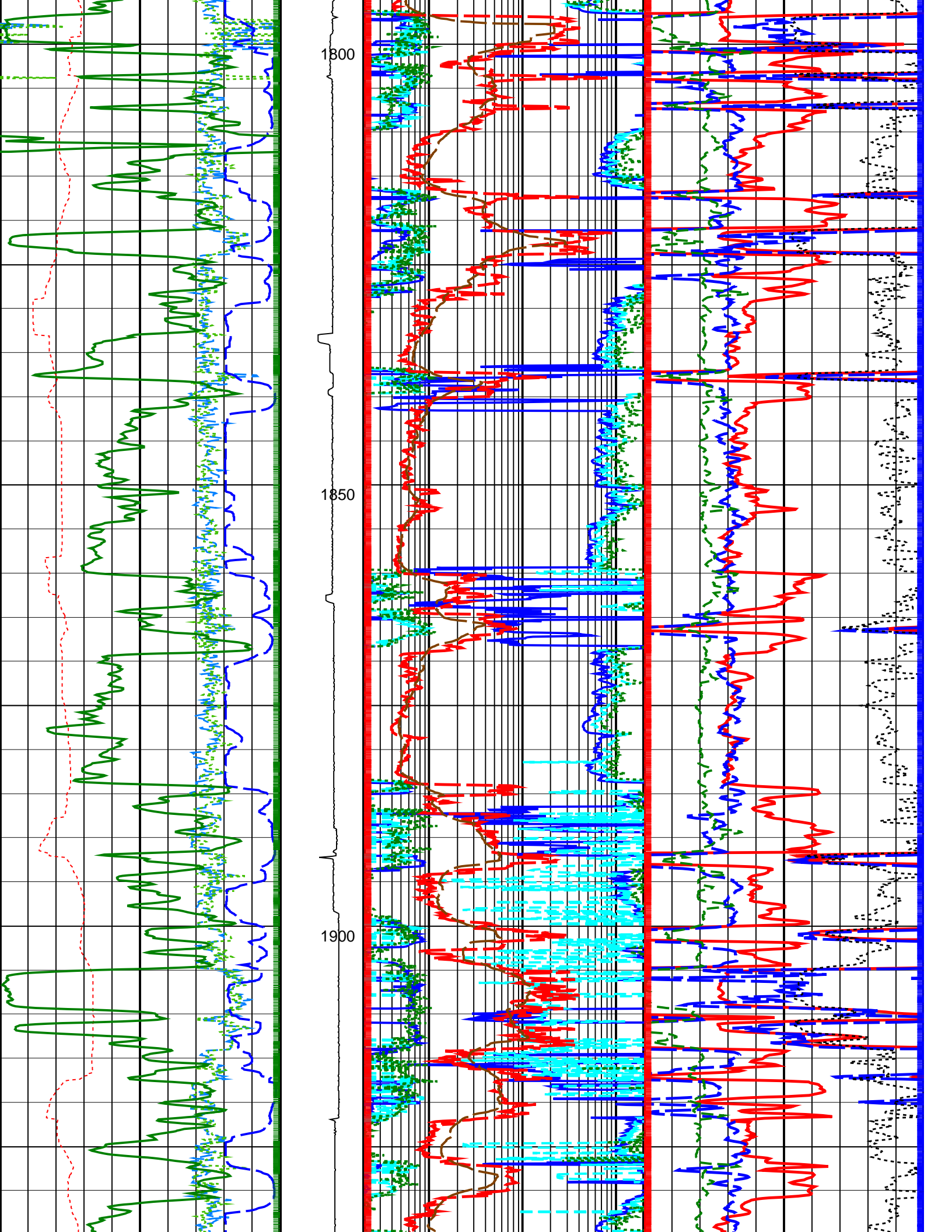
† Ring Samples

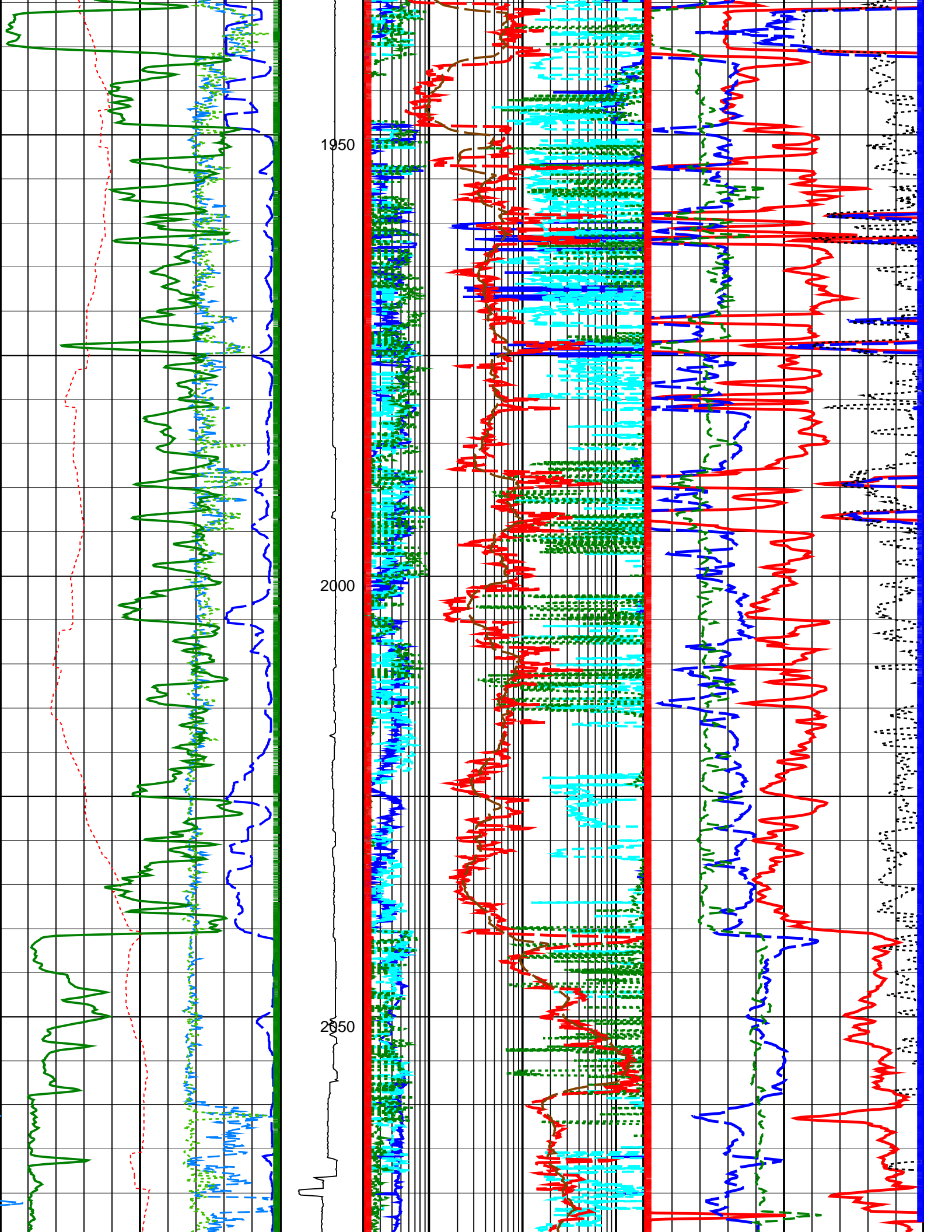
<p>Rate of Penetration, Averaged over Last 5ft (ROP5_RM) (M/HR) 200 0</p>	<p>Bit Resistivity (RES_BIT) (OHMM) 0.2 200</p>	
<p>RAB Gamma Ray (GR_RAB) (GAPI) 0 200</p>	<p>Ring Resistivity (RES_RING) (OHMM) 0.2 200</p>	<p>Bulk Density Correction (DRHO) (G/C3) -0.25 0.25</p>
<p>Vertical Hole Diameter (VERD) (IN) 6 16</p>	<p>Shallow Button Resistivity (RES_BS) (OHMM) 0.2 200</p>	<p>Photoelectric Factor (PEF) (----) 0 10</p>
<p>Horizontal Hole Diameter (HORD) (IN) 6 16</p>	<p>Medium Button Resistivity (RES_BM) (OHMM) 0.2 200</p>	<p>Thermal Neutron Porosity (TNPH) (PU) 45 -15</p>
<p>Density Time After Bit (TAB_DEN) (HR) 0 10</p>	<p>ADN Rotational Speed (RPM_ADN) (RPM) 0 250</p>	<p>Deep Button Resistivity (RES_BD) (OHMM) 0.2 200</p> <p>Bulk Density (RHOB) (G/C3) 1.95 2.95</p>

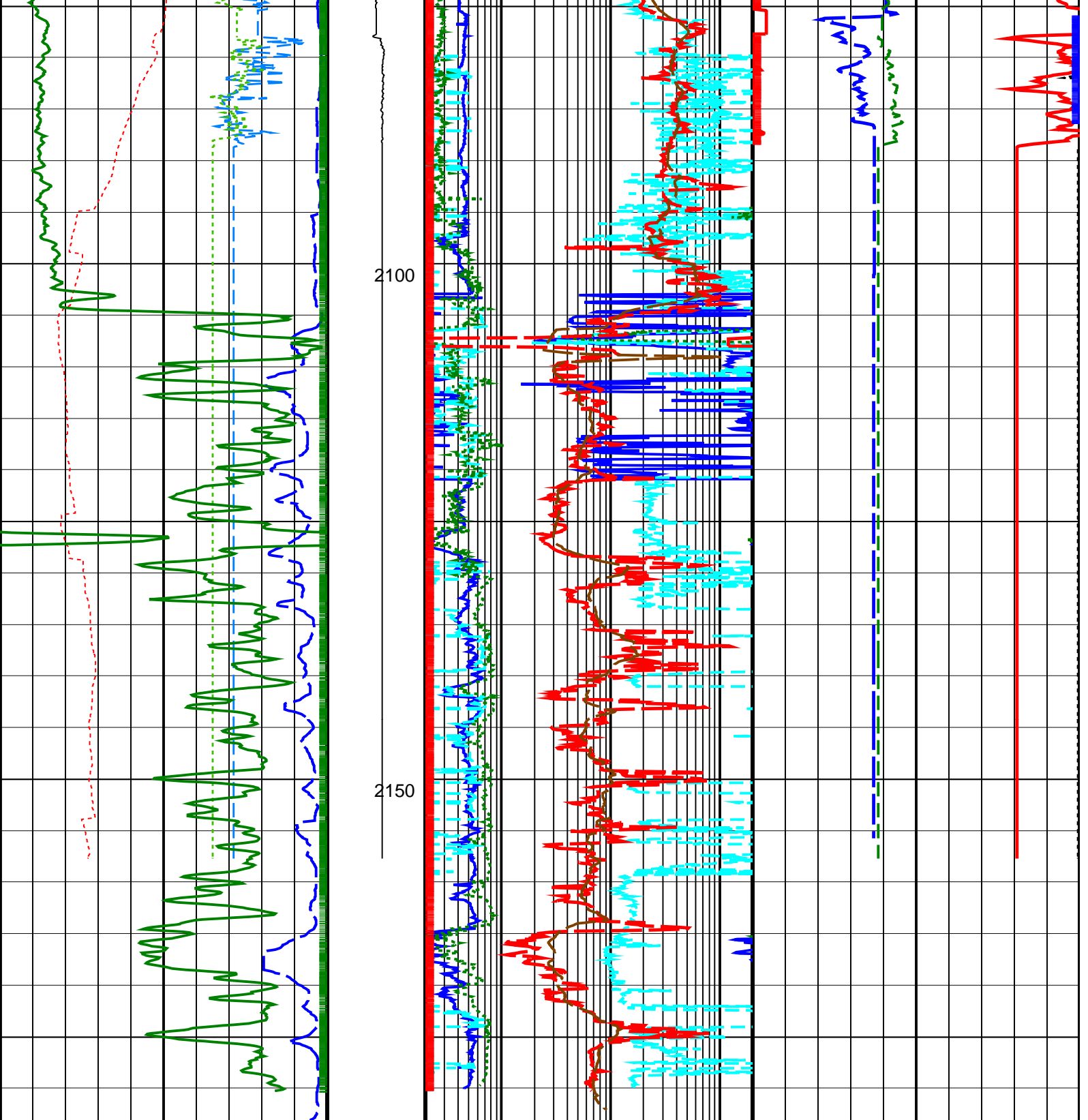












Density Time After Bit (TAB_DEN) (HR)	0 10	ADN Rotational Speed (RPM_ADN) (RPM)	0 250	Deep Button Resistivity (RES_BD) (OHMM)	0.2 200	Bulk Density (RHOB) (G/C3)	1.95 2.95
Horizontal Hole Diameter (HORD) (IN)	6 16			Medium Button Resistivity (RES_BM) (OHMM)	0.2 200	Thermal Neutron Porosity (TNPH) (PU)	45 -15
Vertical Hole Diameter (VERD) (IN)	6 16			Shallow Button Resistivity (RES_BS) (OHMM)	0.2 200	Photoelectric Factor (PEF) (----)	0 10
RAB Gamma Ray (GR_RAB) (GAPI)	0 200			Ring Resistivity (RES_RING) (OHMM)	0.2 200	Bulk Density Correction (DRHO) (G/C3)	-0.25 0.25

Rate of Penetration, Averaged over Last
5ft (ROP5_RM)
200 (M/HR) 0

Bit Resistivity (RES_BIT)
0.2 (OHMM) 200

PIP SUMMARY

Density Samples †

Neutron Samples †

‡ Gamma Ray Samples

† Ring Samples

IDEAL Version: ID13_0C_14
IDF

ARC8A-AA

id13_0c_02